



MANUFACTURERS REPRESENTATIVE

WAREHOUSE STOCK

TO PLACE AN ORDER | P: 205.942.7081 | F: 205.942.7098 | www.AirTechAL.com

TABLE OF CONTENTS

PRICE INDUSTRIES AIR DEVICES	3 - 7
Ceiling Diffusers, Plaster Frames, Filter Grilles, Dampers, Supply Registers, Return Grilles, Return Registers, Egg Crates, Door Grilles & Accessories	
THERMAFLEX FLEXIBLE DUCT	8
Flexible Duct, Duct Ties	
JER-AIR SPIN-IN, REDUCERS & TAKE-OFFS	9 - 10
GREENHECK CEILING FANS, ROOF FANS	11-12
Ceiling Fan Accessories	
GREENHECK ROOF CURBS	13
PRICE INDUSTRIES VAV BOXES	13
GREENHECK WALL LOUVERS	13
DOOR LOUVERS	14
GREENHECK BRICK VENTS	14
GREENHECK FIRE DAMPERS	14 - 15
GREENHECK & JL INDUSTRIES ACCESS DOORS	15 - 16
PATE PIPE CURB ASSEMBLY	17
MIRO PIPE SUPPORTS	17
AIR PRODUCTS & CONTROLS SMOKE DETECTORS	17
GREENHECK STARTERS	18

SUPPLY & RETURN GRILLES



PRICE INDUSTRIES MODEL SCD-31

- Round Neck
- Lay-In Style
- Steel Construction
- Removable Inner Core
- Available with Volume Damper
- White Finish

NECK SIZES	PANEL SIZES
6, 8, 10, 12, 14	24 x 24
6, 8	12 x 12



PRICE INDUSTRIES MODEL SPD-31

- Round Neck
- Lay-In Style
- Steel Construction
- Removable Inner Core
- Available with Volume Damper
- White Finish

NECK SIZES	PANEL SIZES
6, 8, 10, 12, 14	24 x 24



PRICE INDUSTRIES MODEL SMD-36 & SMD-3P

- 18 x 18
- Steel Construction
- Beveled Frame (SMD-6)
- Lay-In Style (SMD-3P)
- Removable Inner Core
- White Finish



PRICE INDUSTRIES MODEL PDF-PERFORATED

- Round Neck
- Lay-In Style
- Steel Construction
- White Finish

NECK SIZES

6, 8, 10, 12, 14



PRICE INDUSTRIES MODEL 80TB-3P

- Lay-In Style In Panel
- Aluminum Construction
- White Finish
- 1/2 x 1/2 x 1/2 Cube Core

MODEL

PANEL SIZES

80TB-3P	6 x 6
80TB-3P	8 x 8
80TB-3P	10 x 10
80TB-3P	12 x 12
80TB-3P	14 x 14
80TB-3P	16 x 16



PRICE INDUSTRIES MODEL PDDR-3

- Lay-In Style
- Steel Construction
- White Finish

MODEL

PANEL SIZES

PDDR	22 x 22
PFRF	24 x 24 (perf panel only)

FILTER GRILLES



PRICE INDUSTRIES MODEL 80FF

- Lay-In Style
- Aluminum Construction
- 1/2" x 1/2" x 1/2" Cube Core
- Hinged Access
- Filter Not Included
- White Finish
- 20" x 20" Neck Size/Filter Size

MODEL	PANEL SIZES
80FF LI	24 x 24

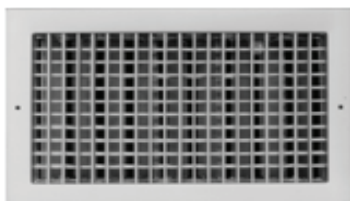


PRICE INDUSTRIES MODEL 530FF

- Lay-In & Surface Mount Style
- Steel Construction
- Fixed Horizontal Bars at a 45° Angle
- Hinged Access
- Filter Not Included
- White Finish
- 20" x 20" Neck Size/Filter Size

MODEL	PANEL SIZES
530FF LI	24 x 24

SUPPLY REGISTERS



PRICE INDUSTRIES MODEL 520D

- Supply Register
- Double Deflection
- Steel Construction
- White Finish
- Opposed Blade Damper

SIZES	SIZES
8 x 6	16 x 6
10 x 4	16 x 8
10 x 5	16 x 10
10 x 6	18 x 6
10 x 8	18 x 8
12 x 5	18 x 10
12 x 6	18 x 12
12 x 8	20 x 6
12 x 10	24 x 6
14 x 6	24 x 8
14 x 8	24 x 10
14 x 10	24 x 12
14 x 12	

RETURN GRILLES, REGISTERS & EGGCRATES



PRICE INDUSTRIES MODEL 530

- Return Grille
- Fixed Horizontal Bars (45 degree angle)
- Steel Construction
- White Finish

SIZES	SIZES
6 x 6	20 x 20
8 x 8	24 x 12
10 x 10	24 x 18
12 x 12	24 x 24
14 x 14	24 x 24 LI
16 x 16	24 x 48 LI
18 x 18	



PRICE INDUSTRIES MODEL 530D

- Return Register
- Fixed Horizontal Bars (45 degree angle)
- Steel Construction
- White Finish
- Opposed Blade Damper

SIZES
6 x 6
8 x 8
10 x 10
12 x 12
14 x 14
16 x 16



PRICE INDUSTRIES MODEL 80 & 80D

- Aluminum Construction
- 1/2" x 1/2" x 1/2" Cube Core
- White Finish

24 x 24 Lay In Panel *

24 x 48 Lay In Panel **

SIZES	SIZES
6 x 6	18 x 18
8 x 8	20 x 20
10 x 10	24 x 24
12 x 12	22 x 22*
14 x 14	22 x 46**
16 x 16	

DOOR GRILLES, DAMPERS, & ACCESSORIES

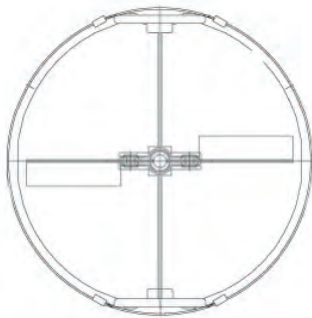


DOOR GRILLE

- Interior Applications
- Satin Aluminum Finish
- Double Flanged Frame
- Narrow Depth, Ideal for Installation into Curtainwalls, Windows & Doors

SIZE

12 x 12
16 x 8
18 x 12
18 x 18
24 x 12
24 x 18
24 x 24



PRICE INDUSTRIES MODEL VCR-8E

- Steel Construction
- For Round Neck Grilles
- Butterfly Damper
- Screw Driver Adjustable
- Mill Finish

SIZES

6, 8, 10, 12, 14, 15

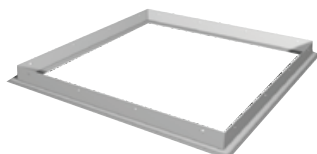


PRICE INDUSTRIES MODEL VCS 3

- Steel Construction
- For Square Neck Grilles
- Butterfly Damper
- Screw Driver Adjustable
- Mill Finish

SIZES

6 x 6
9 x 9
12 x 12
15 x 15
18 x 18



PRICE INDUSTRIES MODEL SPF

- T-Bar Frame
- Steel Construction
- For Plaster Ceilings
- White Finish
- Diffuser Accessory

MODEL

PANEL SIZES

SPF	12 x 12
SPF	24 x 24
SPF	24X48

FLEXIBLE DUCT SYSTEM



THERMAFLEX MKE-R6 FLEX

- 25' Per Box
- Low/High Pressure Flex

SIZES	SIZES
4	10
5	12
6	14
7	16
8	18
9	

THERMAFLEX EVERCLEAN R-8

- 25' Per Box
- High Pressure Flex

SIZES	SIZES
4	10
5	12
6	14
7	16
8	18
9	20

THERMAFLEX SLD

- 50' Per Box
- Uninsulated

SIZES	SIZES
6	10
7	12
8	14
9	

DUCT TIES

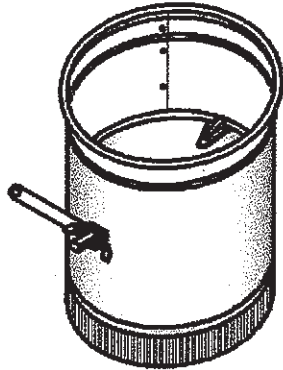
PLASTIC DUCT TIES

- Designed for Flexible Air Ducts & Air Connectors
- Allows Quick and Secure Installation
- DCV-10 SHORT FITS UP TO 9" DIA
- DCV-13 LONG FITS UP TO 12" DIA

METAL DUCT TIES

- Stainless Steel Construction
- Worm Gear Bands
- Available in sizes 6" to 8" & 9" to 12"

SPININS, REDUCERS & TAKEOFFS

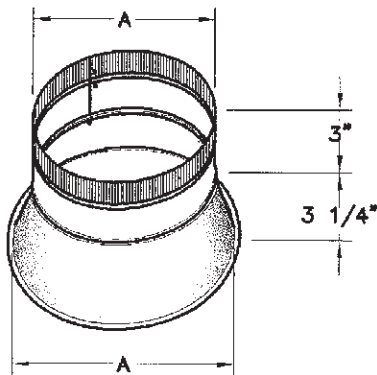


JER-AIR SPIN-IN MODEL S-3

- Stand Off
- Sizes 4" thru 12" Constructed with 28 Gage Galvanized Steel
- Sizes 14" thru 20" Constructed with 26 Gage Galvanized Steel
- Factory Assembled Adjustable Damper Hardware
- Barrel Exit Beaded
- Riveted Construction

SIZES

5
6
7
8
9
10
12
14
16
18

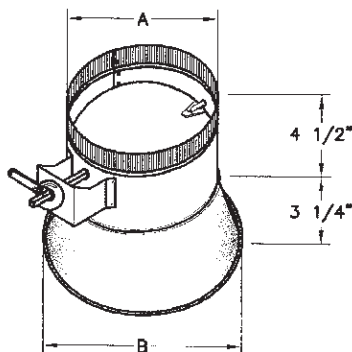


JER-AIR CONICAL SPIN FITTING MODEL C-300

- Galvanized Steel with Riveted Construction
- Sizes 4" thru 10" Constructed with 28 Gage Galvanized Steel
- Sizes 12" thru 18" Constructed with 26 Gage Galvanized Steel
- Barrel Exit Beaded and Crimped
- Factory Assembled Adjustable Damper Hardware
- 2" Standoff Quadrant with 1/4" Axle Shaft

SIZES

6
7
8
9
10
12
14
16

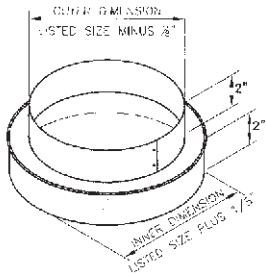


JER-AIR CONICAL SPIN FITTING MODEL C-302

- Galvanized Steel with Riveted Construction
- Sizes 4" thru 10" Constructed with 28 Gage Galvanized Steel
- Sizes 12" thru 18" Constructed with 26 Gage Galvanized Steel
- Barrel Exit Beaded and Crimped
- Factory Assembled Adjustable Damper Hardware
- 2" Standoff Quadrant with 1/4" Axle Shaft

SIZES

6
7
8
9
10
12
14
16



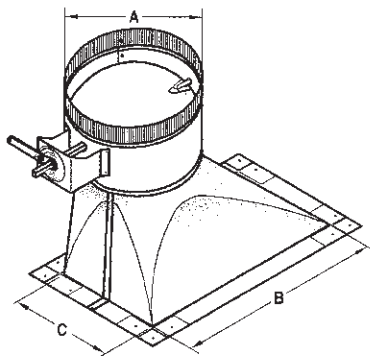
JER-AIR REDUCERS MODEL SR

- 28 Gage Galvanized Steel Construction

SIZES

SIZES

6 - 5	10 - 9
7 - 6	12 - 10
8 - 7	14 - 12
10 - 8	16 - 14



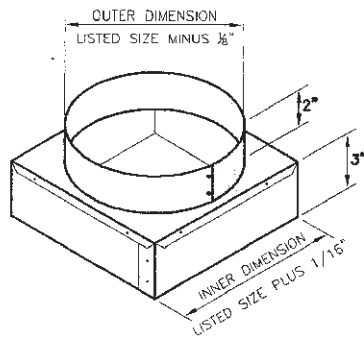
JER-AIR 45 DEGREE TAKE-OFF MODEL AT-502

- Comes with Gasket, Damper & 2" Standoff Quadrant
- Sizes 4" thru 10" Constructed with 28 Gage Galvanized Steel
- Sizes 12" thru 18" Constructed with 26 Gage Galvanized Steel
- 1" Wide Mounting Flanges Complete with Corner Clips
- Pre-punched Screw Holes

ROUND DIAMETER

RECTANGULAR OPENING

6	12 x 6
8	12 x 6
10	16 x 6.5
12	18 x 8.5
14	20 x 9.5
16	24 x 12



JER-AIR SQUARE TO ROUND MODEL TR-3

- Constructed with 28 Gage Galvanized Steel
- Riveted Construction
- 3" High Square Necks & 2" High Round Neck

SQUARE OPENING

ROUND DIAMETER

SQUARE OPENING

ROUND DIAMETER

6 x 6	6	15 x 15	14
8 x 8	6	18 x 18	14
8 x 8	8	18 x 18	16
9 x 9	8	20 x 20	12
9 x 9	9	20 x 20	14
10 x 10	8	22 x 22	10
10 x 10	10	22 x 22	12
12 x 12	6	22 x 22	14
12 x 12	8	22 x 22	16
12 x 12	10	22 x 22	18
12 x 12	12	24 x 24	18
15 x 15	12		

CEILING FANS



SP-B



SP-A

GREENHECK DIRECT DRIVE CEILING FANS MODEL SP

MODEL	CFM @ .125	CFM @ .25	SONES @ .25	OUTLET
SP-B50	51	40	2.0	6" RD
SP-B70	71	54	1.4	6" RD
SP-B80	77	62	1.3	6" RD
SP-B90	89	72	1.5	6" RD
SP-B110	110	97	2.0	6" RD
SP-B150	154	152	3.5	6" RD
SP-B200	194	191	4.5	6" RD
SP-A110	115	98	.5	8 x 6
SP-A200	242	224	2.5	8 x 8
SP-A250	271	250	3.0	8 x 8
SP-A290	287	257	3.0	8 x 8
SP-A390	391	368	4.5	8 x 8
SP-A410	405	351	3.0	8 x 8
SP-A510	501	439	4.5	8 x 8
SP-A700	723	700	5.5	19½ x 8
SP-A710	701	653	6.0	10 x 8



GREENHECK INLINE CEILING FANS MODEL CSP

MODEL	CFM @ .125	CFM @ .25	SONES @ .25	OUTLET
CSP-A110	110	102	0.9	8 x 6
CSP-A190	198	180	2.0	8 x 6
CSP-A200	226	203	0.9	8 x 8
CSP-A250	241	221	2.0	8 x 8
CSP-A290	292	265	2.0	8 x 8
CSP-A410	403	364	2.0	8 x 8
CSP-A510	506	464	2.0	8 x 8
CSP-A700	752	739	2.0	19½ x 8
CSP-A710	688	635	2.5	10 x 8

CEILING FAN ACCESSORIES

GREENHECK CEILING FAN ACCESSORIES

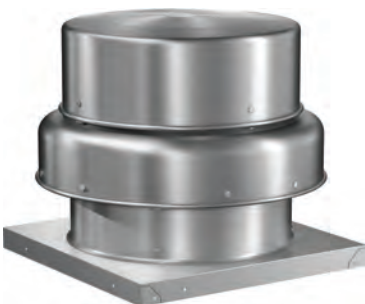
MODEL	TYPE	MAX DUCT SIZE	FOR FANS	CURB CAP	CURB OD
RCC7	FLAT ROOF	7		15 x 15	14 x 14
GRS10	FLAT ROOF	10		19 x 19	18 x 18
WC 4	WALL CAP	4	B50 - B80		
WC 6	WALL CAP	6	B90 - B200		
WC 8	WALL CAP	8	A200 - A510		
WC 10 x 3	WALL CAP	10-1/4 x 3-1/4	50 - 290		
RJ 4	ROOF	8-1/4 x 5-5/16	C50 - B50, B80		
VI-KIT - SP/CSP	ISOLATION KIT		SP & CSP		
SP FAN GRILLE	SP-50 - 200				

ROOF FANS

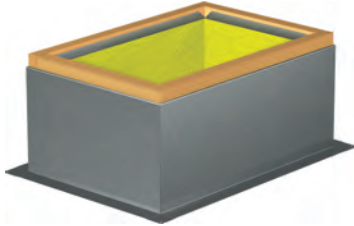
GREENHECK INLINE ROOF FANS MODEL G

- Accessories: Back Draft Damper

MODEL	CFM @ .25	SONES	CFM @ .375	SONES	HP	CURB OD
G-080-VG6X-QD	179 - 544	4.4 - 8.6	233 - 486	5.6 - 8.7	1/6	15-3/4 SQ
G-095-VG6X-QD	389 - 1013	4.6 - 10.6	493 - 903	6.5 - 10.4	1/6	15-3/4 SQ



ROOF CURBS



ROOF CURBS

- Support Structures for Fans and Ventilators
- For Flat Roofs
- With Insulation

SIZES

14 x 14
15-3/4 x 15-3/4
17-3/4 x 17-3/4
19-3/4 x 19-3/4

VAV BOXES

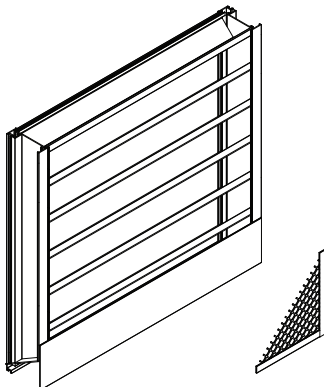


PRICE INDUSTRIES VAV BOX MODEL SDV5

- Zinc Coated Steel Housing
- Sealed and Gasketed for Leak Resistance
- Sheet Metal Enclosure
- Price SP200 Velocity Pressure Sensor
- 3/4" Price Fiber Free Foam Lining
- Accessories: Hot Water Re-Heat Coils
120/24 Volt Transformer

HOT WATER COILS	HOT WATER COILS
6	2R - 6
8	2R - 8
10	2R - 10
12	2R - 12
14	2R - 14

WALL LOUVERS

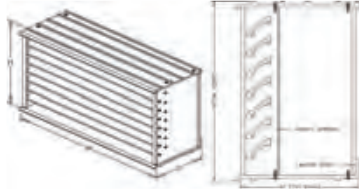


GREENHECK WALL LOUVERS MODEL ESD-403

- Protect Air Intake & Exhaust Openings in Building Exterior Walls
- Incorporates a Draining System Which Allows the Water to Escape at the Sill
- Mill Finish
- Flanged Frame

SIZE	SIZE
12 x 12	18 x 18
14 x 14	24 x 12
16 x 12	24 x 24
16 x 16	36 x 36
18 x 12	48 x 48

BRICK VENTS



GREENHECK BRICK VENTS MODEL BVE

- Designed for Installation in Masonry Walls
- Anodized Aluminum Construction
- Built-in Aluminum Mesh Insect Screen
- Available with & without Flange at 15-5/8" x 7-3/4"

FIRE DAMPERS



GREENHECK ROUND FIRE DAMPER MODEL FD 150 X 12

- 1.5 Hour UL Label
- Use with Fire Partitions (2Hrs.)
- Galvanized Steel Construction
- Vertical/Horizontal Installation
- Closure Springs & Latches
- Fusible Links UL Listed (165° F)
- 12" Sleeve

SIZE	SIZE
5	14
6	16
8	18
10	20
12	



GREENHECK CEILING RADIATION DAMPER MODEL CRD-2

- For Protection of Ceiling Openings in Floor/Ceiling Assemblies with Fire Resistance Ratings of 3 Hours or Less
- Tested and are Labeled in Accordance with UL 555C
- Accessories: Thermal Blankets

SIZE	SIZE
6	12
8	14
10	16



GREENHECK CEILING RADIATION DAMPER MODEL CRD-60

- For Protection of Ceiling Openings in Floor/Ceiling Assemblies with Fire Resistance Ratings of 3 Hours or Less
- Tested and are Labeled in Accordance with UL 555C
- Accessories: Thermal Blankets

SIZE	SIZE
6 x 6	22 x 10
8 x 8	24 x 12
9 x 9	22 x 22
10 x 10	24 x 24
12 x 12	

ACCESS DOORS



GREENHECK ROUND STYLE ACCESS DOOR

- For Low to Medium Pressure Duct Systems
- Provides a Durable, Practical, & Inexpensive means of Gaining Access to Damper Components Inside the Ductwork
- Fits Duct Sizes 5" - 24"

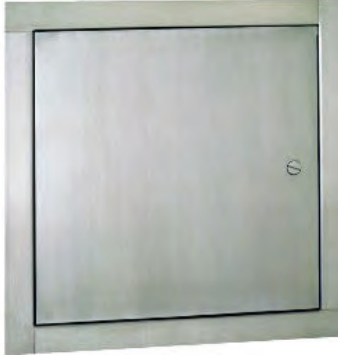


GREENHECK ACCESS DOOR MODEL CAD

- For Low to Medium Pressure Duct Systems
- Provides a Durable, Practical, & Inexpensive means of Gaining Access to Damper Components Inside the Ductwork

SIZE	SIZE
6 x 6	16 x 16
8 x 8	18 x 18
10 x 10	20 x 20
12 x 12	24 x 24
14 x 14	

ACCESS DOORS



JL INDUSTRIES ACCESS DOOR MODEL TM

- Frame & Door Constructed from 16 Gauge Steel
- For Masonry, Tile and Wallboard
- Convenient Access for Inspection or Service to Vital Components of Plumbing, Heating, Conditioning and/or Electrical Systems.

SIZE

10 x 10
12 x 12
14 x 14
16 x 16
18 x 18
20 x 20
24 x 24



JL INDUSTRIES FIRE RATED FLUSH ACCESS DOOR MODEL FD

- Access Panel is Rated to 1-1/2 Hours for Vertical Surfaces and 1 Hour Combustible/3 Hour Non-Combustible Horizontal Surfaces. All Models Feature a 2" Thick Insulated Door and Spring-Assisted Closer

SIZE

12 x 12
14 x 14
16 x 16
18 x 18
24 x 24



DUCTMATE UL LISTED GREASE DUCT DOORS

MODEL	OPENING SIZE	WEIGHT
D128ULB1	12 x 8	43 Lbs.
D1814ULB1	18 x 14	48 Lbs.

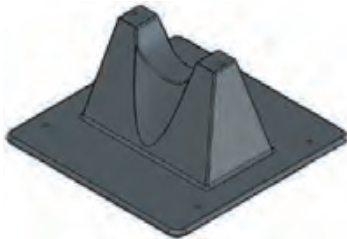
PIPE CURB ASSEMBLY



PATE PIPE CURB ASSEMBLY MODEL PCC-5

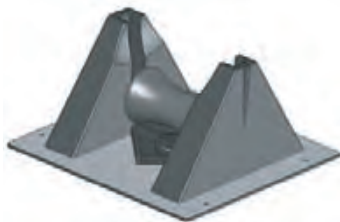
- Molded from Acrylic Clad ABS to Provide UV Protection
- Extremely Durable with an Effective Temperature Rating of -40 to +160 Degrees Fahrenheit
- Pre-Punched Mounting Holes for Easy Installation
- Includes 5 Boots & 10 Clamps

MIRO SUPPORTS



MIRO INDUSTRIES SUPPORTS MODEL 1.5

- Polycarbonate Resin Construction
- Supports Roof-Mounted Gas Pipes, Electrical Conduit, Solar Piping and Other Mechanical Piping
- Accommodates up to 1.5" Inside Diameter Pipes
- Maximum Outside Diameter of Pipe is 1.9"



MIRO INDUSTRIES SUPPORTS MODEL 3R

- Polycarbonate Resin Construction
- Roller-Bearing Support for Roof-Mounted Gas Pipes, Electrical Conduit, Solar Piping and Other Mechanical Piping
- Accommodates up to 3" Inside Diameter Pipes
- Maximum Outside Diameter of Pipe is 3.75"

SMOKE DETECTOR



DUCT SMOKE DETECTOR MODEL SL-2000

- Low-Flow Technology: Ionization Type
- Models Listed for Velocities Between 100-4000 ft./min
- Sampler Tube up to 5 Feet Long

STARTER



GREENHECK MOTOR STARTERS MODEL MSSC

- HOA Keypad with LED Status Pilot Lights
- Voltage & Dry Contact Inputs for Auto Run Command
- Wide Range Class 1-30 Electronic Overload
- Sizes: MSSC 1-9, MSSC 1-18 & MSSC 1-32

SPRING HANGING ISOLATORS



COMPLETE CURB PRODUCTS - SPRING HANGING ISOLATORS

MODEL	LBS
SHB-2	25 lb rating
SHB-5	50 lb rating
SHB-10	100 lb rating

